

# HUNTERDON COUNTY

## SOLID WASTE AND RECYCLING SERVICES

Route 12 County Complex  
Building #1, 2nd Floor  
PO Box 2900  
Flemington, NJ 08822-2900  
PHONE: 908-788-1351  
FAX 908-782-7510  
[health@co.hunterdon.nj.us](mailto:health@co.hunterdon.nj.us)

### SPECIAL COLLECTION DAY FOR COMPUTERS, COMPUTER MONITORS AND TELEVISIONS

**DATE:** Saturday, September 22, 2018 (next event: Saturday, November 10, 2018)

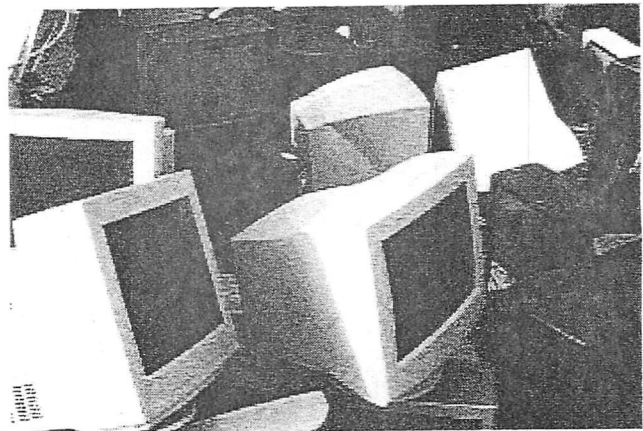
**TIME:** 9:00am to 1:00pm

**RAIN OR SHINE**

**LOCATION:** Route 12 County Complex, Flemington, NJ ([directions](#))

**CONTACT:** (908) 788-1351

**SPONSORED BY:** County of Hunterdon and Waste Management of NJ



#### WE WILL ACCEPT:

#### UP TO TEN (10) ITEMS PER PERSON OF THE FOLLOWING:

- Computers,
- Monitors,
- Digital Copy Machines, Printers and
- Televisions

#### WE WILL NOT ACCEPT:

Any other devices not listed above.

**FOR LARGER QUANTITIES OR COMMERCIAL DISPOSAL OF COMPUTERS CONTACT:**  
[Electronics Recyclers International \(ERI\)](#) 1-800-374-3473

Hazardous Waste will be accepted during the [County's Hazardous Waste Clean-up Program](#).

## **DIRECTIONS TO**

### **THE HUNTERDON COUNTY ROUTE 12 (LIBRARY) COMPLEX LOCATED AT**

**314 STATE ROUTE 12 EAST  
FLEMINGTON, NEW JERSEY**

#### **FROM POINTS SOUTH**

Follow Route 202/31 North to the 202/31 circle in Flemington. Go  $\frac{3}{4}$  the way around the circle, bearing right onto State Route 12 West. Proceed approximately  $\frac{1}{10}$  of 1 mile to the Main Street (Flemington) Circle. Go  $\frac{2}{2}$  the way around the circle, bearing right to continue on State Route 12 West. Proceed approximately  $\frac{6}{10}$  of 1 mile to the Mine Street/County Route 523 (Dvoor) Circle. Go  $\frac{2}{2}$  the way around the circle, again bearing right to continue on State Route 12 West. Proceed approximately  $\frac{8}{10}$  of 1 mile from the circle and County Complex will be on the left.

#### **FROM POINTS NORTH**

**If taking Route 202 South:** Proceed to the 202/31 circle in Flemington going  $\frac{2}{2}$  the way around the circle, bearing right onto State Route 12 West. Follow directions below.

**If taking Route 31 South:** Proceed to the 202/31 circle in Flemington bearing right at the circle onto State Route 12 West. Follow directions below.

Proceed approximately  $\frac{1}{10}$  of 1 mile to the Main Street (Flemington) Circle. Go  $\frac{2}{2}$  the way around the circle, bearing right to continue on State Route 12 West. Proceed approximately  $\frac{6}{10}$  of 1 mile to the Mine Street/County Route 523 (Dvoor) Circle. Go  $\frac{2}{2}$  the way around the circle, again bearing right to continue on State Route 12 West. Proceed approximately  $\frac{8}{10}$  of 1 mile from the circle and County Complex will be on the left.

#### **FROM POINTS WEST**

Take State Route 12 East to intersection with County Route 579. After traffic light, proceed approximately  $1\frac{3}{4}$  mile and County Complex will be on the right.